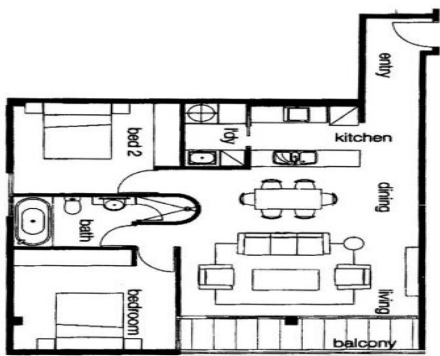




1206-118 Russell St Melbourne



1206/118 Russell Street MELBOURNE, VIC



2



1

## Melbourne's 'Paris End' Hero!

HOW DO I REGISTER TO INSPECT ? - Instructions available below this ad.

Perfectly located on the corner of Little Collins St. (CBD East), this low-maintenance spacious 2 bedroom apartment is sure to impress!

Featuring:

- Melbourne's "Paris End" living at its best
- Large balcony flows out from lounge room
- Elevated 12th floor position
- Approximately 81sqm
- Marble tile entry
- Sleek easy-to-maintain kitchen with Bosch oven, Smeg dishwasher, Gas cooktop, Marble bench space, and ample Storage
- Separate laundry room
- Two generous, light-filled bedrooms with built in robes
- Central bathroom with large corner shower and separate full size bath
- Split System heating and cooling for year-round comfort
- Secure building entrance

**\$625pw**

**Type:** Apartment  
**Date Available:** 05/05/2024  
**Bond:** \$2716

**Mikaele Horsnell**

0396648100