

2101/245 City Road SOUTHBANK, VIC



2



1



1

## North Facing Luxe Living with Secure Car Park!

- Designed by Squillace Architects with completion in 2021
- Sleek kitchen with popular gas cooktop & electric oven combo
- Living/dining flows into the outdoor space with an abundance of natural light
- North facing floor to ceiling windows frame iconic Melbourne
- Generous bedrooms with mirrored built in robes
- Sparkling bathroom positioned centrally with laundry facilities
- Spacious balcony with gorgeous City vistas perfect for a caf? set
- Split system heating & cooling for year round comfort
- Exclusive resort style amenities include indoor pool, outdoor terrace & gym
- Positioned a stone's throw away from the Arts Precinct, MCG, Yarra River & more
- Woolworths Metro conveniently located downstairs in the building
- Public transport options all on your doorstep
- Secure basement car park included

**\$580,000**

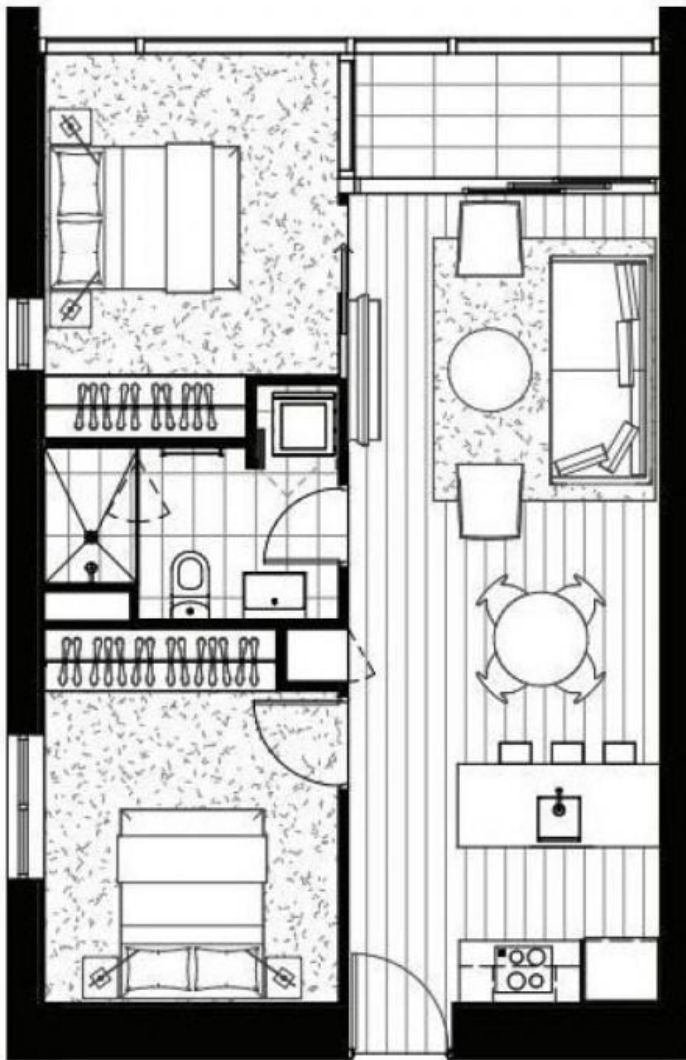
**Type:** Apartment

**Inspect:** Saturday, 18th May 2024 12:00 - 12:30

**Rhiannon East**

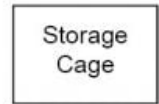
0396648115

Harcourts Melbourne City, Estate Agents, specialising in sales & leasing of Warehouse, Heritage, Unique ? WHU properties



Car Space

(Not In Position)



Storage  
Cage

(Not In Position)