



23/7 Drewery Lane MELBOURNE, VIC



2



2



1

Dovers Printery with Iconic Outlook ? Circa 1910

Deadline Sale (unless sold prior) Tuesday 23rd April at 12pm

- The earliest & one of few remaining examples of the Flat Slab, Turner Mushroom System
- Hugh Ralston Crawford design in the Commercial Palazzo style
- Built for the cigar & cigarette manufacturers Sniders & Abraham in 1910
- The early 1960's saw Dovers Typesetters convert the building to a print works
- Refurbished and subdivided into spacious residences in 1995
- Exposed concrete columns and ceilings
- Massive, charming warehouse windows
- Balcony with iconic backdrop and Northern aspect
- Light-filled living area with polished timber floors
- Heating & cooling in living room & ceiling fan too
- Generous kitchen with convenient island bench
- Main bedroom with walk-through robe and ensuite
- Second bedroom with plenty of storage
- Neat, clean main bathroom would welcome refurbishment
- Convenient unique laundry room

Deadline Sale | \$1,050,000 - \$1,150,000

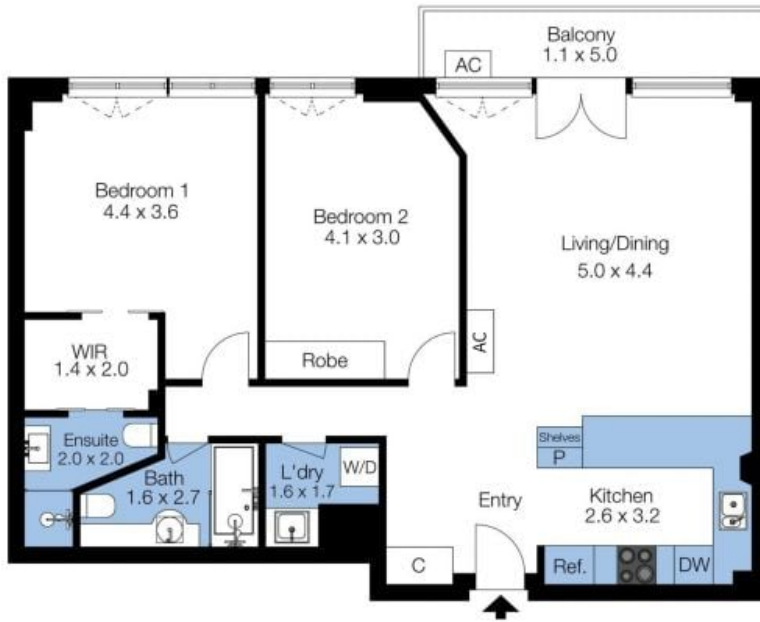
Type: Apartment

Dionne Wilson

0396648114

Mackenzie Paterson

96648113



The floor plan is not to scale; measurements are indicative and in metres. Exterior elements are not in position. Plans should not be relied on; interested parties should make and rely on their own enquiries.