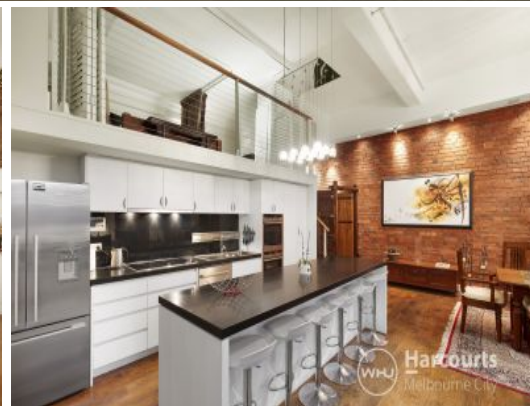




WHU Harcourts Melbourne City



46/38 Manchester Lane MELBOURNE, VIC



2



2

## Volume Overload ? Manchester House ? Circa 1912

- The volume must be seen to be appreciated
- Edwardian Neo-Baroque style warehouse converted in 2000
- Majestic proportions & double height ceilings throughout
- Stunning steel framed windows, aspect to Heritage Flinders Ln
- Gorgeous central Bay Window to watch the world go by
- Floors are dressed with lovely hardwood timber
- Desired corner position with Juliette balcony
- Entertainer's kitchen including long island bench
- Grand main bedroom, huge double-glazed window & balcony
- Ensuite with dual sink, large spa bath and walk-in shower
- Mezzanine second bedroom with ample robes & storage
- Great size main bathroom including large hidden laundry
- Clean & efficient Hydronic Heating for cosy Winters
- Convenient huge storage room above the ensuite
- Secured boutique building with lift access to your floor
- Live in the heart of Flinders Ln, enjoy the delights of the city
- Purchase will include the piano

**\$2,200,000**

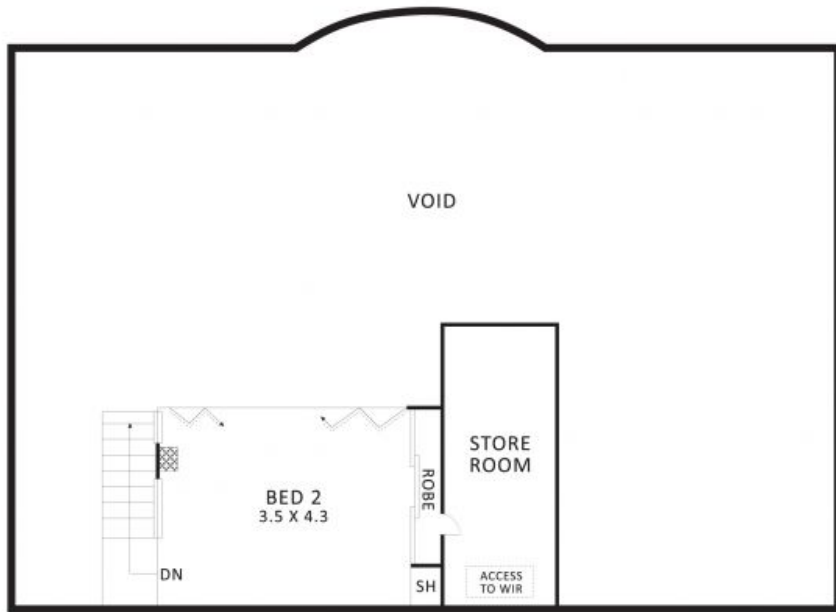
**Type:** Apartment

**Dionne Wilson**

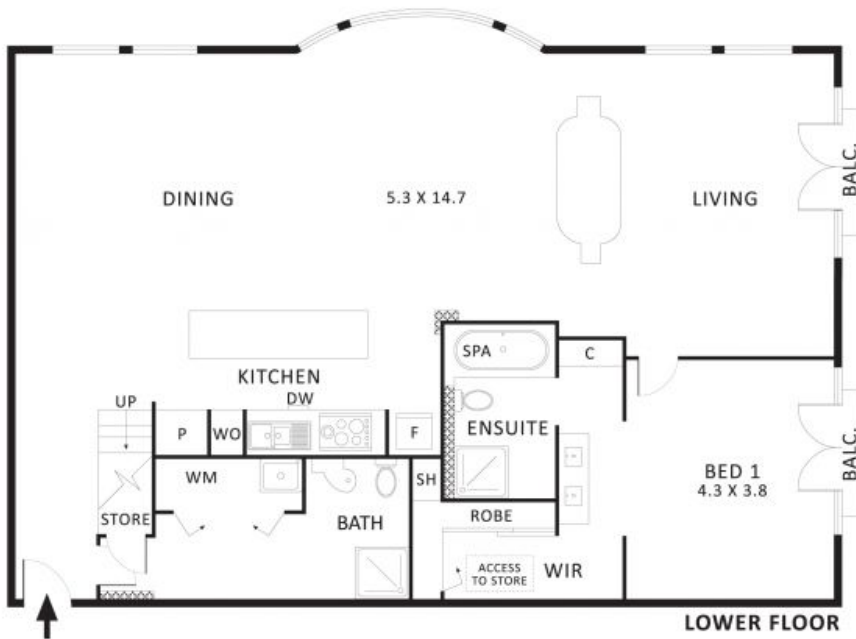
0396648114

**Mackenzie Paterson**

96648113



UPPER FLOOR



LOWER FLOOR



0 1 2 3 4 5

Scale in metres. Indicative Only. Dimensions are approximate.  
 All information contained herein is gathered from sources we believe to be reliable. However we cannot guarantee its accuracy and interested parties should rely on their own enquiries.

**46/38 Manchester Lane MELBOURNE**