



103/211 Powlett Street EAST MELBOURNE, VIC



Spacious Split-Level Living in Tribeca ? Circa 1882

- Grand heritage facade - Circa 1882
- Generous 75m2 split level apartment
- North facing with heritage arched windows
- Separate living & dining room on the upper floor
- Sleek well-equipped kitchen
- Oversize bedroom complete with built-in robes
- Bathroom with separate toilet & European style laundry
- Reverse cycle air conditioning for year round comfort
- Secure entrance with car park plus storage cage
- Communal pool, gym and sun terrace make for enjoyable living
- Tribeca's plaza provides convenient cafes, supermarket, liquor shop & more
- Convenient trams to the city at your door
- Stroll to the city's offerings via the Fitzroy gardens

\$525,000 - 75m2

Type: Apartment

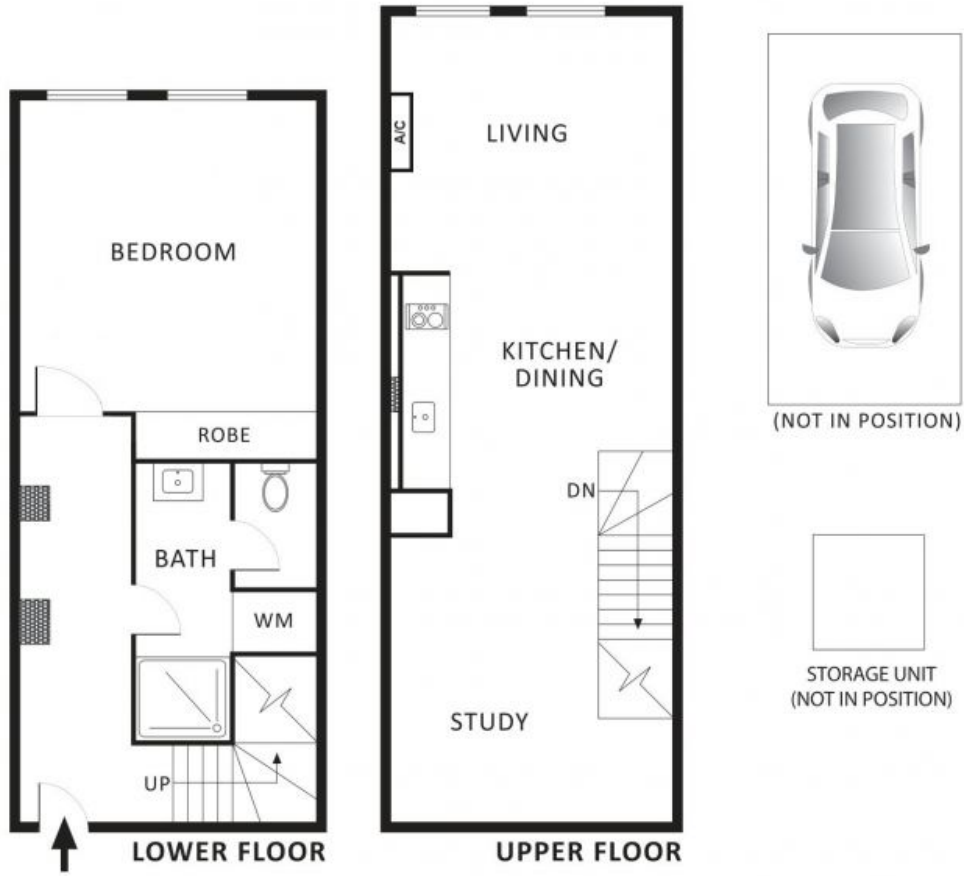
OUTGOINGS

Council Rates - \$1,613.00 pa

Water Rates - \$ 678.98 pa

Dionne Wilson

0396648114



All information contained herein is gathered from sources we believe to be reliable. However we cannot guarantee its accuracy and interested parties should rely on their own enquiries.

103/211 Powlett Street EAST MELBOURNE