



103/211 Powlett Street EAST MELBOURNE, VIC



1



1



1

## Spacious Split-Level Living in Tribeca ? Circa 1882

- Grand heritage facade - Circa 1882
- Generous 75m2 split level apartment
- North facing with heritage arched windows
- Separate living & dining room on the upper floor
- Sleek well-equipped kitchen
- Oversize bedroom complete with built-in robes
- Bathroom with separate toilet & European style laundry
- Reverse cycle air conditioning for year round comfort
- Secure entrance with car park plus storage cage
- Communal pool, gym and sun terrace make for enjoyable living
- Tribeca's plaza provides convenient cafes, supermarket, liquor shop & more
- Convenient trams to the city at your door
- Stroll to the city's offerings via the Fitzroy gardens

### OUTGOINGS

Council Rates - \$1,613.00 pa

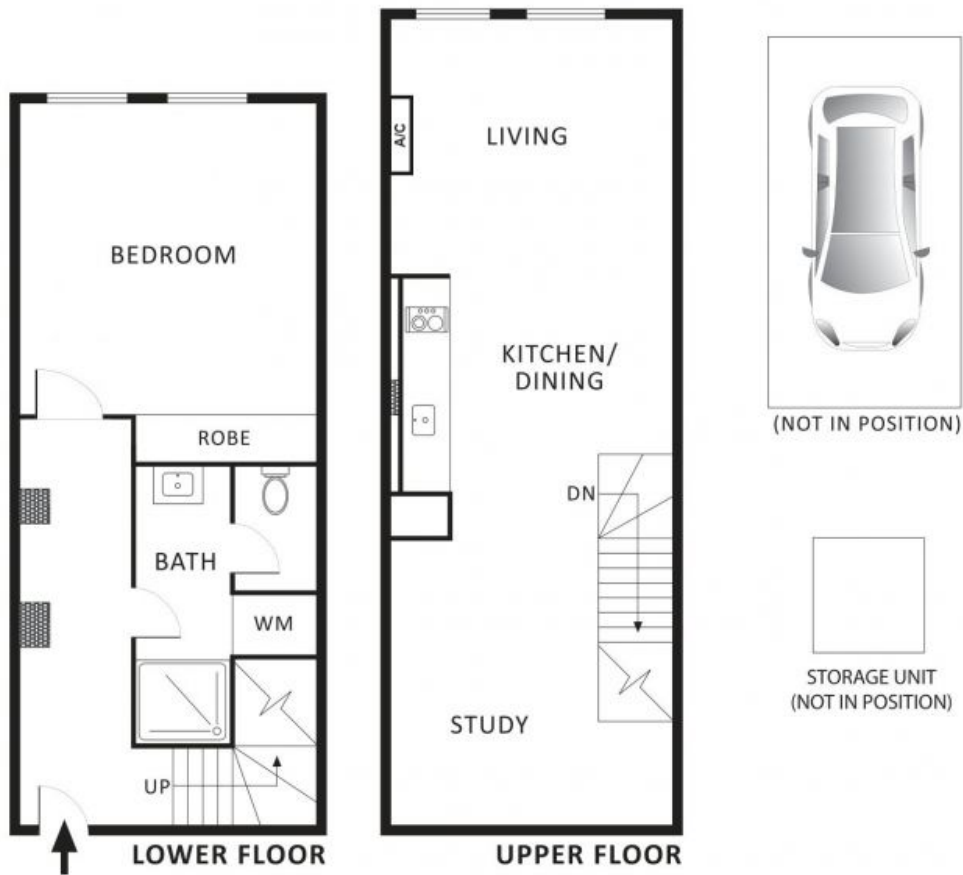
Water Rates - \$ 678.98 pa

**\$525,000 - 75m2**

**Type:** Apartment

**Dionne Wilson**

0396648114



All information contained herein is gathered from sources we believe to be reliable. However we cannot guarantee its accuracy and interested parties should rely on their own enquiries.

**103/211 Powlett Street EAST MELBOURNE**