

33/7 Drewery Lane MELBOURNE, VIC



Historical Icon ? Dovers Printery ? Circa 1910

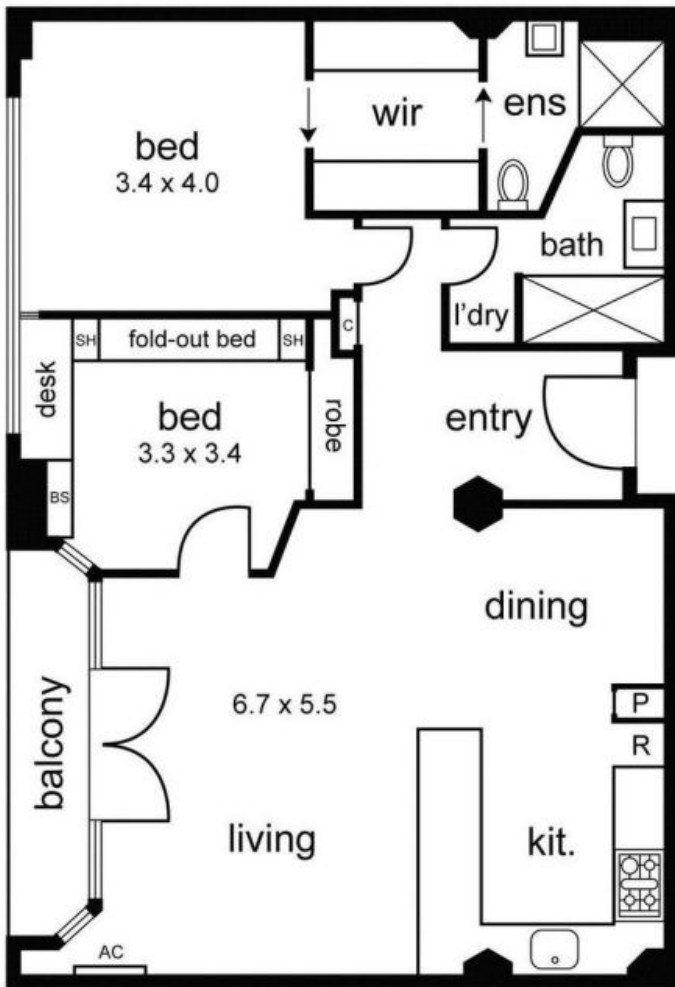
- The earliest & one of few remaining examples of the Flat Slab, Turner Mushroom System
- Hugh Ralston Crawford design in the Commercial Palazzo style
- Built for the cigar & cigarette manufacturers Sniders & Abraham in 1910
- The early 1960's saw Dovers Typesetters convert the building to a print works
- Refurbished and subdivided into spacious residences in 1995
- Exposed concrete columns and ceilings
- Massive, charming warehouse windows
- Balcony with iconic city backdrop and Northern aspect
- Light-filled living area with polished timber floors
- Generous renovated kitchen with stone island bench
- Main bedroom with walk-through robe and ensuite
- Second bedroom with plenty of storage
- Quaint, boutique block of only 45
- Secured entrance & secured car park on title
- Stunning communal rooftop garden with city backdrop

Private Sale

Type: Apartment

Dionne Wilson

0396648114



secure
undercover
carspace