

1/7 Drewery Lane MELBOURNE, VIC



2



2



1

## Dovers Printery ? Industrial Icon ? Circa 1910

Deadline Sale -Now Thursday 14th April at 12pm.  
(was Wednesday 27th April at 12pm)

- The earliest & one of few remaining examples of the Flat Slab, Turner Mushroom System
- Designed by Hugh Ralston Crawford in the Commercial Palazzo style
- Built for the cigar & cigarette manufacturers Sniders & Abraham in 1910
- The early 1960's saw Dovers Typesetters convert the building to a print works
- Refurbished and sub divided into residences in 1995
- Located in the heart of the CBD, in a tree lined, cobble street
- Stunning exposed concrete ceilings
- Huge feature mushroom pillars add character and charm
- Soaring 4m ceiling heights
- Huge windows with heritage-building outlook & leafy vista
- Delightful corner position
- Generous proportions throughout
- Quaint, boutique block of only 45
- Secured entrance & secured car park on title

**Deadline Sale | \$950,000 -**

**\$1,000,000**

Type: Apartment

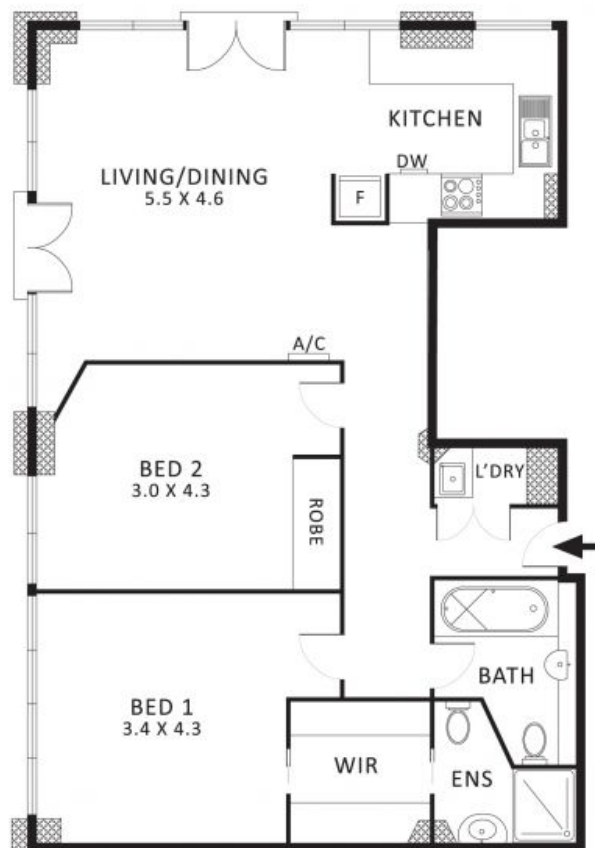
Year Built: 1910

**Dionne Wilson**

0396648114

**Rhiannon East**

0396648115



(NOT IN POSITION)

Indicative Only. Dimensions are approximate.  
All information contained herein is gathered from sources we believe  
to be reliable. However we cannot guarantee its accuracy and interested  
parties should rely on their own enquiries.

**1/7 Drewery Lane MELBOURNE**