

Harcourts
Melbourne City



21/8 Wellington Crescent EAST MELBOURNE, VIC



3



1



1

Light Filled Garden Apartment

HOW DO I REGISTER TO INSPECT ? - Instructions available below this ad.

Step inside this stunning freshly painted garden view apartment in the heart of the tightly held Wellington Gardens. Featuring brand new carpets and floorboards, creating a modern and light filled home, with a leafy aspect from every window. Offering two bedrooms with an additional upstairs study/guest bedroom.

Enjoy ducted air-conditioning/heating or open up the windows finished in stunning plantation shutters.

Kitchen is smartly appointed, opening to the living room by a serving hatch. Not an inch of space wasted with a built-in study/home office in the dividing passage between the dining room and lounge.

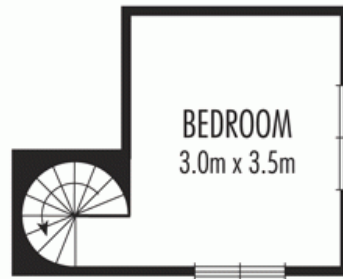
Private and secure perfect for the professional family or the empty nester who wants the pleasures of a leafy outer suburb.

\$725 per week

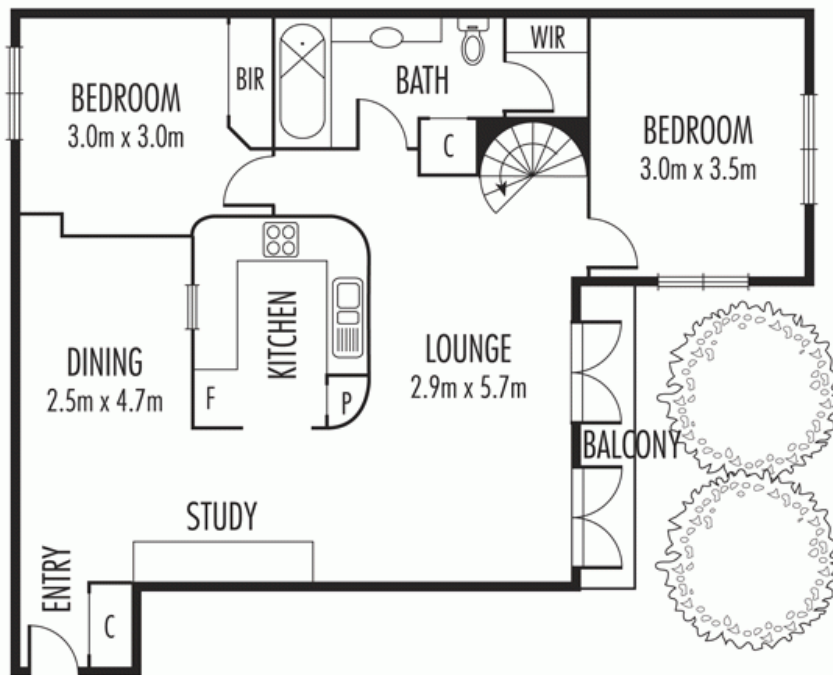
Type: Apartment
Date Available: 08/03/2022
Bond: \$3151

Mikaele Horsnell

0396648100



UPPER LEVEL



Disclaimer: Please note floor plans are indicative only and not drawn to exact scale. All dimensions are approximate. Potential buyers should view the property in person.