



211/25 Hotham Street EAST MELBOURNE, VIC



1



1

## Studio Living in East Melbourne

HOW DO I REGISTER TO INSPECT ? - Instructions available below this ad.

Quiet, private and secure this apartment is situated in the leafy streets of East Melbourne within a boutique complex of 40.

Comprising:

- \* Light filled open plan living space,
- \* Contemporary kitchenette with stone bench top & glass splash back
- \* A neat bathroom with separate shower and WC
- \* 1 x parking permit available through City of Melbourne

Offering a truly central location; less than a km from the excitement of the MCG or the relaxation of the Fitzroy Gardens and 270 meters from the West Richmond Train station making the commute a breeze.

\*\*\*\*To Register for Inspection\*\*\*\*

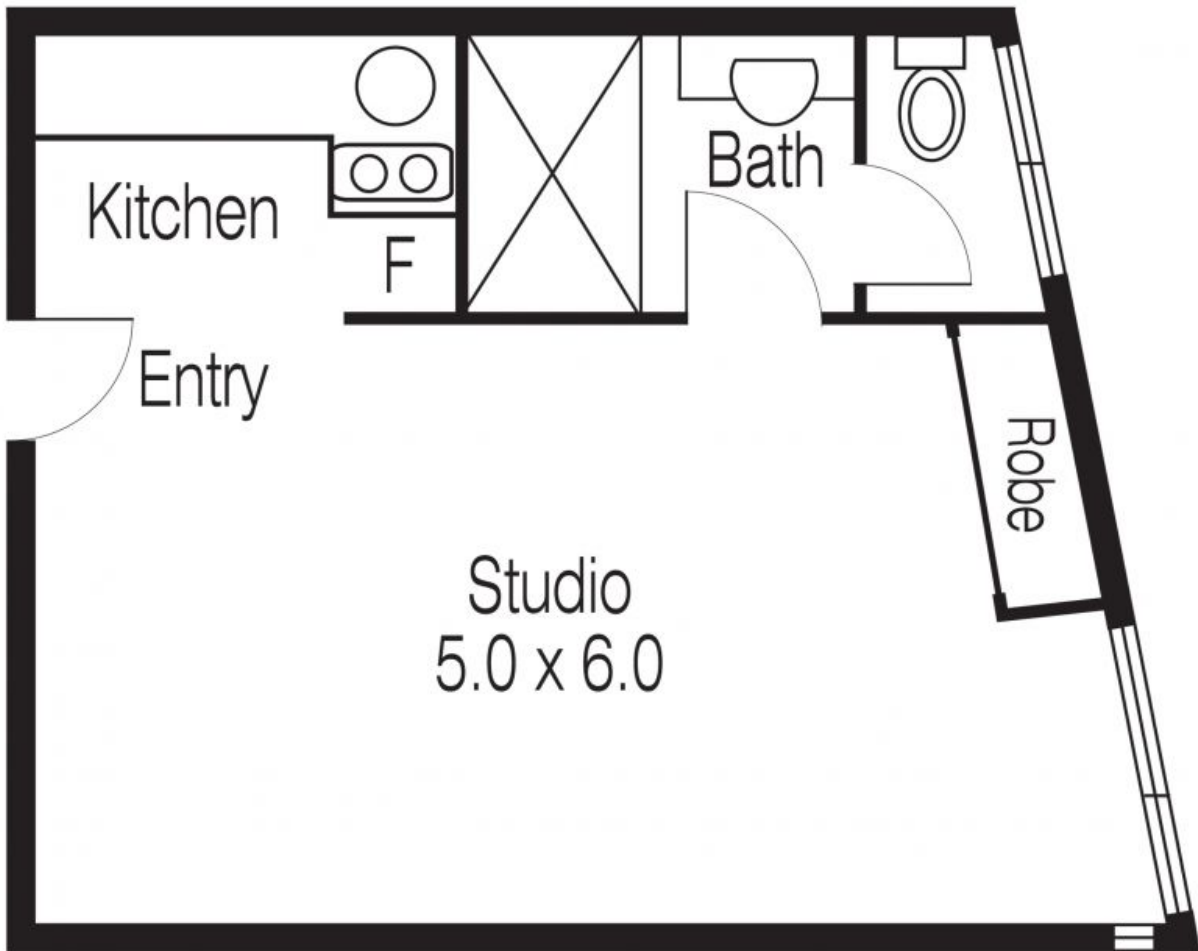
You must register to inspect our properties. To see times & book your inspection please click "contact the agent" a quick

**\$225 per week**

**Type:** Apartment  
**Date Available:** 20/10/2021  
**Bond:** \$978

**Daniella Ferraro**

0396648105



Not To Scale

Every care has been taken to verify the accuracy of details in this brochure. Prospective purchasers are requested to take such action as is necessary to satisfy themselves of any pertinent