

29/300 King Street MELBOURNE, VIC



Walk on the warehouse wild side

Deadline Sale (unless sold prior) Tuesday 23rd August at 12pm

A true warehouse conversion full of texture, charm and character, this unique offering of approx. 74sqm will simply delight.

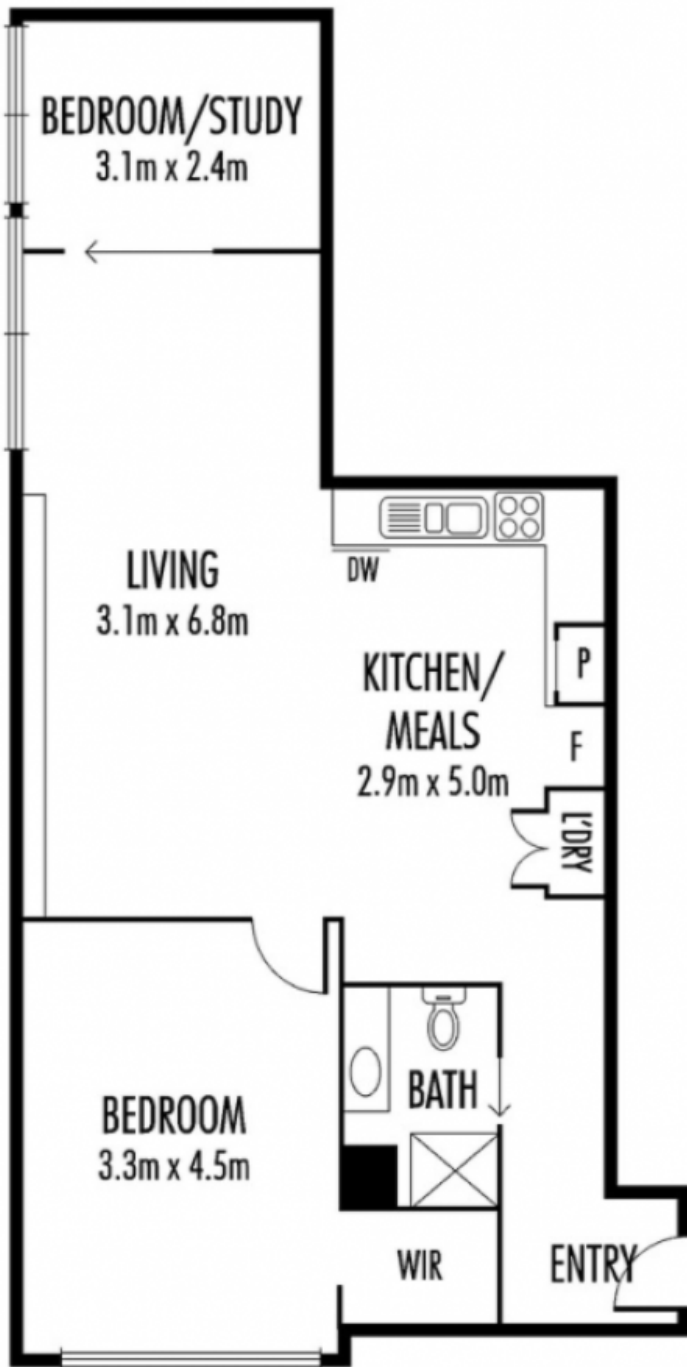
- * Soaring ceilings, timber floors, warehouse windows
- * Vast open plan living and dining
- * Versatile floorplan to design your dream space
- * Updated kitchen with excellent storage
- * Oversized main bedroom with walk in robe
- * Smart second bedroom or study
- * Sparkling renovated bathroom
- * Cleverly concealed laundry
- * Ceiling fans, electric panel wall heating
- * Secure undercover car park
- * Whisper quiet position at the rear of the building
- * Low body corporate fees

Under Offer

Type: Apartment

Rhiannon East

0396648115



CARSPACE
(NOT IN POSITION)