



7B/27-37 Russell Street MELBOURNE, VIC



2



2

## CAVENDISH HOUSE - 1930's Stunner

Cavendish House built in a Chicagoesque architectural style has wooed many since the 1930's. Beautifully positioned on the prestigious corner of Russell Street and Flinders lane in Melbourne's Paris End we're proud to offer 7B, positioned on the North East Corner.

- Huge heritage windows enjoyed in every room
- Soaring ceilings give a wonderful feel
- Humongous master bedroom & ensuite
- Very generous second bedroom
- Vast kitchen most houses would envy
- Ample living room to soak up the charming ambience
- Abundant storage throughout
- Inspection will allow full appreciation of the size and volume
- An Andrew McConnell restaurant soon to call ground level home

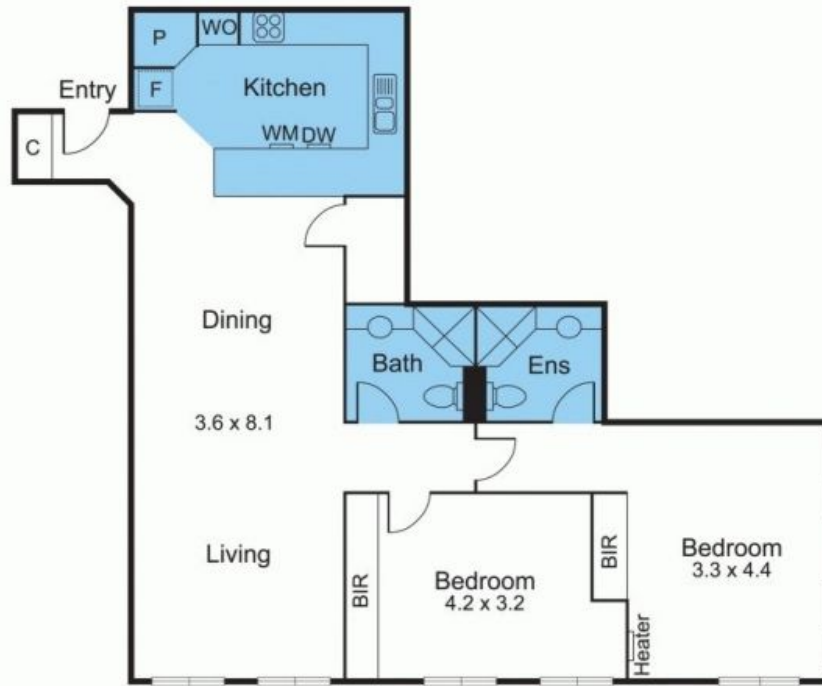
Whilst every care is taken to ensure accuracy of the sizes, plans & information contained herein no guarantees or warranties are given. Clients are required to make their own investigations, carefully

### Contact Agent

Type: Apartment

**Dionne Wilson**

0396648114



0 1 2 3 4 5 m

Scale in metres. Indicative only. Dimensions are approx.

