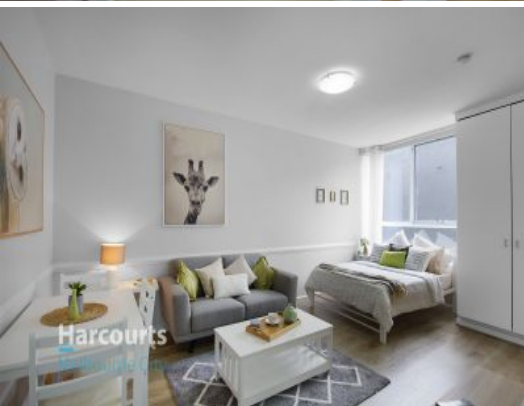
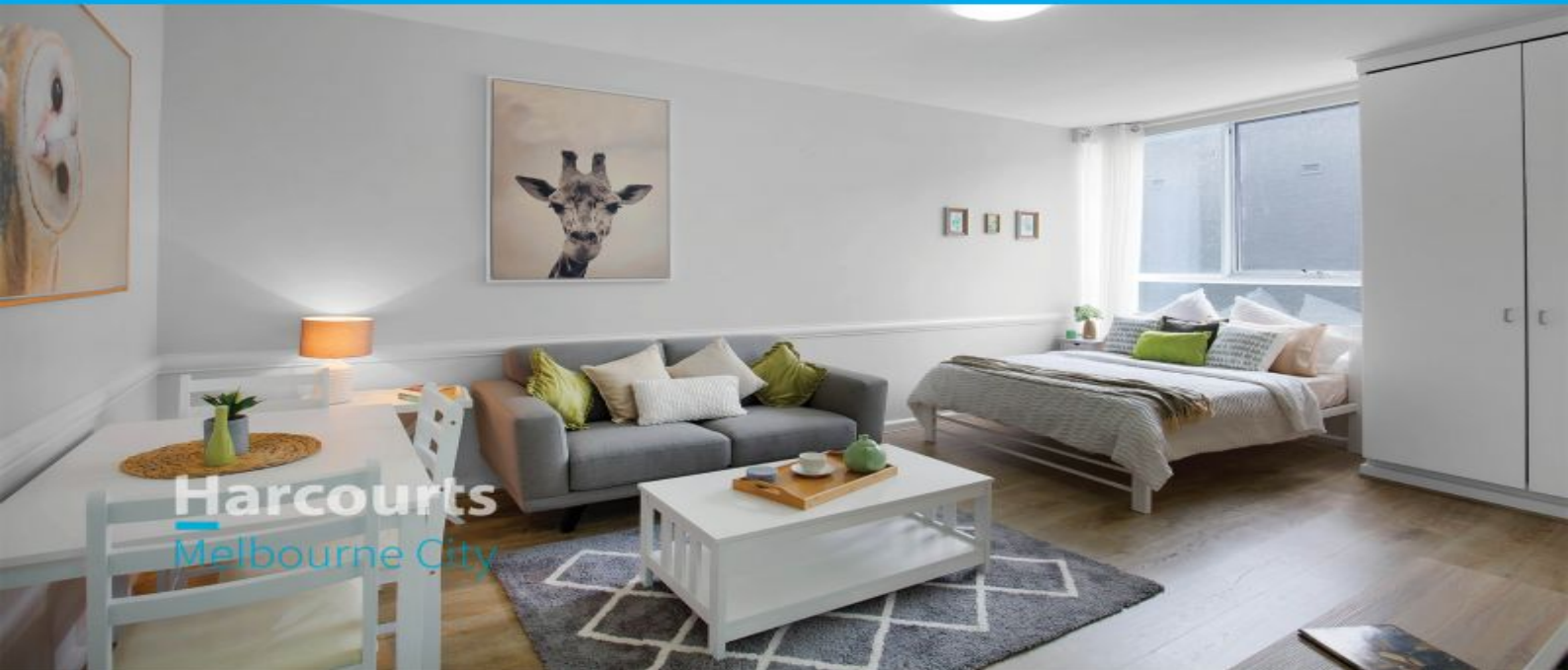




REGISTER to privately inspect this property
See details in ad



102/25 Hotham Street EAST MELBOURNE, VIC



1



1

Social Climber

HOW DO I REGISTER TO PRIVATELY INSPECT DURING COVID-19? -
Instructions available below this ad.

This cosmopolitan CBD fringe pad situated in the leafy streets of East Melbourne makes a perfect investment or home away from home for the professional or footy fan! Located just 300 metres from trains and trams the commute is a breeze. Nothing cheaper in the suburb you can live in!

Comprising:

- Open plan living space
- Contemporary kitchenette finished in stone and glass
- Peace of mind with 1st floor secure position
- Neat bathroom with separate WC
- On street parking permit available
- Less than a kilometre from the excitement of the MCG
- or the relaxation of the Fitzroy Gardens

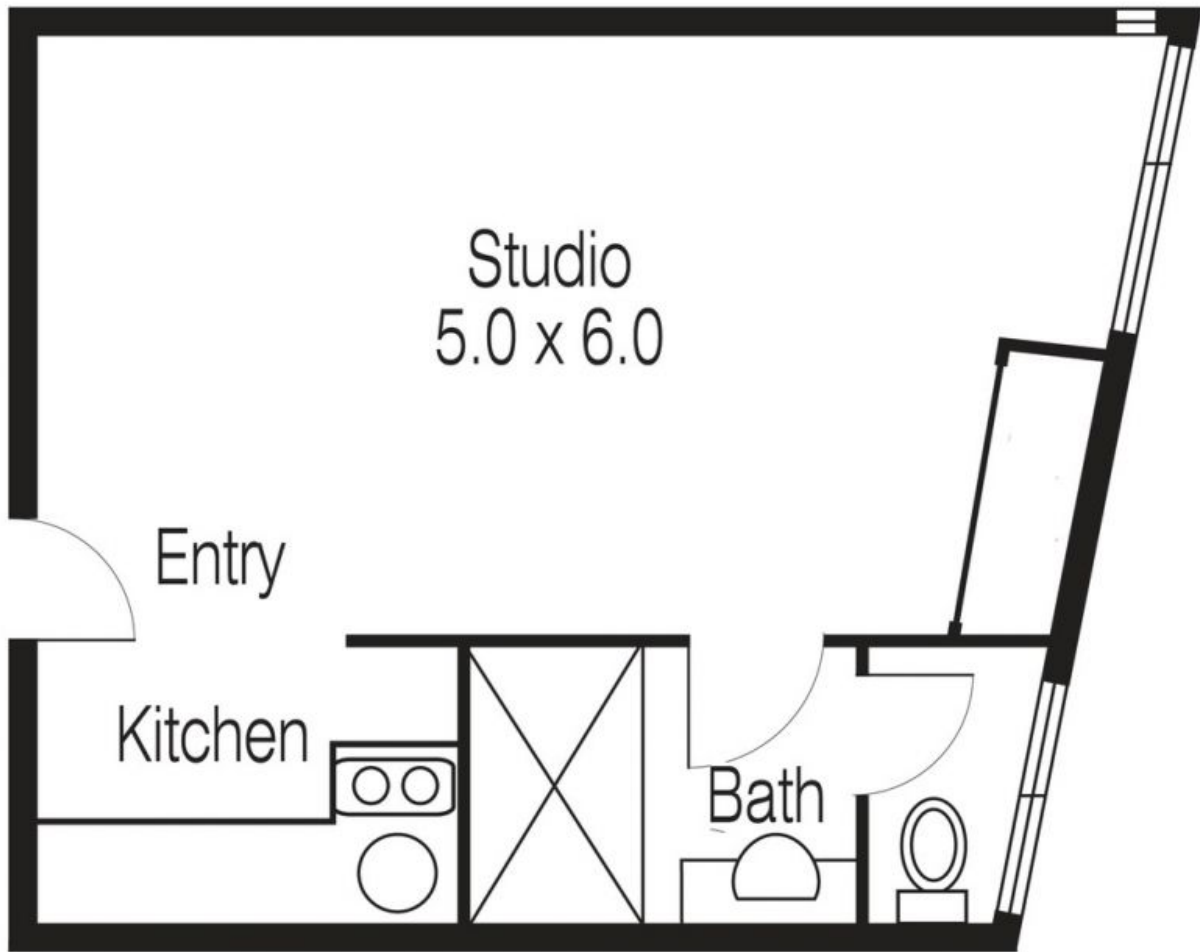
****To Register for Inspection****

Contact Agent

Type: Apartment

Dionne Wilson

0396648114



Not To Scale

Every care has been taken to verify the accuracy of details in this brochure. Prospective purchasers are requested to take such action as is necessary to satisfy themselves of any pertinent matters