



22/27 Flinders Lane MELBOURNE, VIC



2



1

## Paris End Warehouse - Quiet Inner-City Oasis

- Highly desired Paris End location
- Quiet position in boutique block
- Esteemed Flinders Lane address
- Soaring ceilings & abundant full height windows throughout
- Light, bright and very private
- Sleek kitchen, with ample cupboard and bench space
- Spacious open plan living/dining area
- Huge bedrooms with big built in robes
- Modern bathroom with green accents and Euro laundry
- Lovely engineered oak timber floors
- Secure storage room
- Current owners return \$50,000 - \$54,000/pa via Airbnb past 4 years

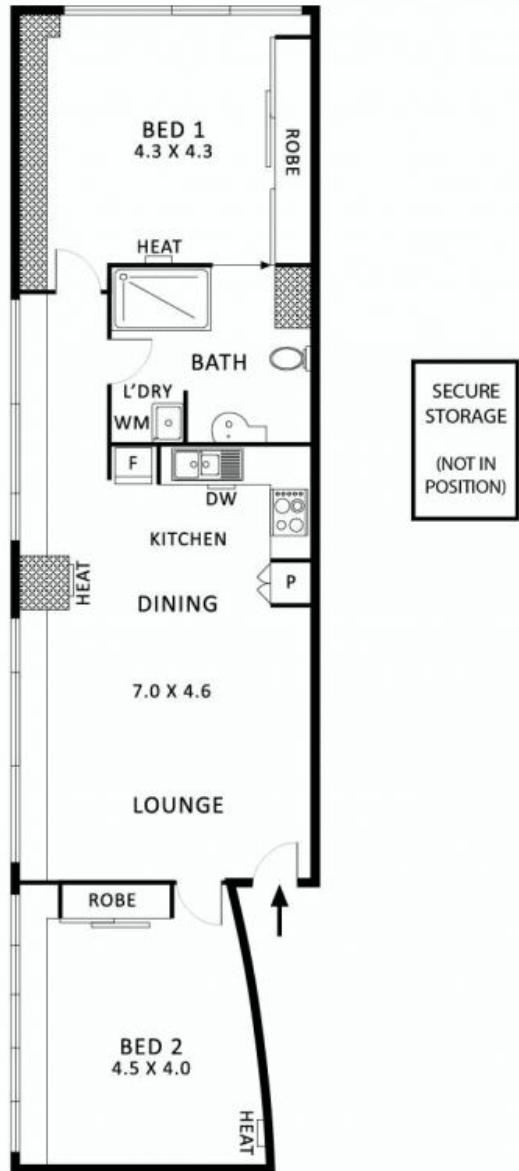
**\$780,000**

**Type:** Apartment

Whilst every care is taken to ensure accuracy of the sizes, plans & information contained herein no guarantees or warranties are given. Clients are required to make their own investigations, carefully check the formal legal documentation & seek independent professional legal advice.

**Dionne Wilson**

0396648114



Scale in metres. Indicative Only. Dimensions are approximate.  
All information contained herein is gathered from sources we believe to be reliable. However we cannot guarantee its accuracy and interested parties should rely on their own enquiries.



**22/27 Flinders Lane MELBOURNE**