



1103/250 Elizabeth Street MELBOURNE, VIC



2



1

Attention fussy shoppers, I have one for you!

Quality, size and one of the most popular layouts in the block

- Generous 82m2 internally
- Huge kitchen with breakfast bench
- Open plan living with dedicated dining area
- Dining area also great as home office
- East facing Terrace
- Two large bedrooms separated by the lounge
- Abundant robes and storage
- Functional two-way bathroom
- Separate European style laundry
- Highly sought after building & position
- Sun terrace, well equipped gym and lovely pool
- Rear of building has direct access to Emporium

\$585,000

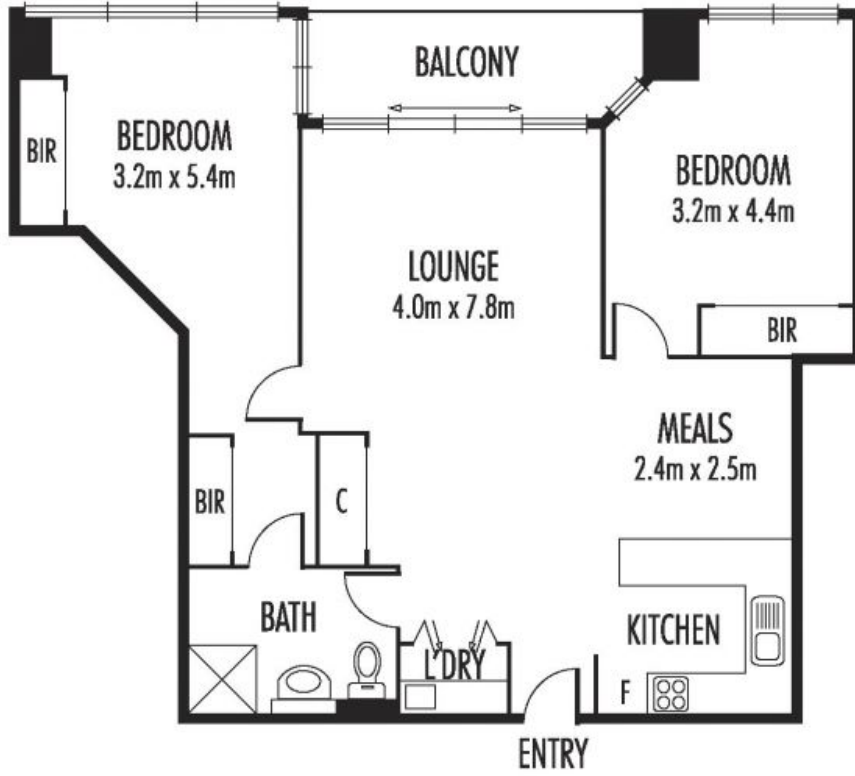
Type: Apartment

Whilst every care is taken to ensure accuracy of the sizes, plans & information contained herein no guarantees or warranties

Dionne Wilson

0396648114

1103/250 ELIZABETH STREET, MELBOURNE



Disclaimer: Please note floor plans are indicative only and not drawn to exact scale. All dimensions are approximate. Potential buyers should view the property in person.